



# LAKE COUNTY HOMELAND SECURITY & EMERGENCY MANAGEMENT

2900 W. 93<sup>RD</sup> AVE. CROWN POINT, IN 46307  
219-755-3549

January 2023 Volume 1 / Issue 1

## COMMUNITY EMERGENCY RESPONSE TEAM (CERT)

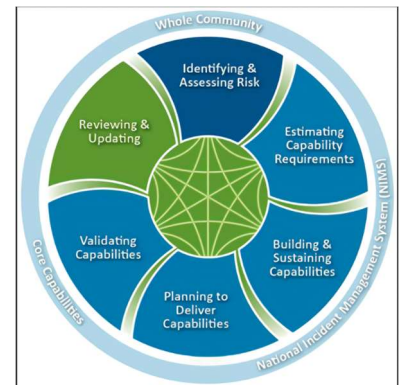
Communities can become more resilient when people get involved in building capacity & planning for the unexpected. CERT training is FREE and covers basic skills that are important to know in a disaster when emergency services are not available.

With training, practice and by working as a team, you will be able to protect yourself and maximize your capability to help for the greatest number of people after a disaster.

<https://medicine.utah.edu/dfpm/occupational-environmental-health/research/outreach/cert>

## WHAT DOES EMERGENCY MANAGEMENT DO ANYWAY?

Emergency Management protects communities by coordinating and integrating all activities necessary to build, sustain, and improve the capability to mitigate against, prepare for, respond to, and recover from threatened or actual natural disasters, acts of terrorism, or other man-made disasters (FEMA).

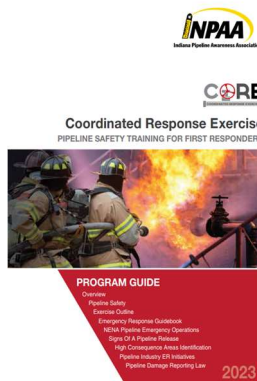


## CONTINUOUS TRAINING

Our department recently participated in an annual coordinated response exercise with local first responders for the International Pipeline Awareness Association (INPAA) to learn all about emergency response pipeline safety training.



January 2023 CERT Team Training



# DO YOU HAVE A DISASTER PLAN?

The National Safety Council offers safety tips specific on preparing for earthquakes, floods, hurricanes and tornadoes, and how to minimize fire risks.

Federal agencies, like Ready.gov and the National Oceanic and Atmospheric Administration also are valuable resources for emergency preparedness. When you face a natural or man-made emergency, try to stay informed through radio, TV or the Internet. In some cases, however, cable, electric and cell phone service will be disabled, making communication nearly impossible.

The National Safety Council recommends the following general precautions that apply to many disaster situations:



- Make sure at least one family member knows first aid and CPR
- Download the FEMA app for resources, weather alerts and safety tips
- Have a family communication plan in place; all members of the family should review and practice the plan
- Have all family members' and other important phone numbers written down or memorized
- Have an emergency kit in your car and at least three days of food and water at home
- Be sure to store all important documents – birth certificates, insurance policies, etc. – in a fire-proof safe or safety deposit box
- Know how to shut off utilities

## WINTER WEATHER PREPAREDNESS



## **WHAT IS NIMS AND WHO NEEDS TRAINING?**

The National Incident Management System (NIMS) guides all levels of government, nongovernmental organizations and the private sector to work together to prevent, protect against, mitigate, respond to and recover from incidents.

NIMS provides stakeholders across the whole community with the shared vocabulary, systems and processes to successfully deliver the capabilities described in the National Preparedness System. NIMS defines operational systems that guide how personnel work together during incidents.

The National Incident Management System (NIMS) Training Program helps to mitigate risk by achieving greater preparedness. The training program facilitates training and qualification of emergency management personnel to NIMS concepts and principles.

The NIMS Training Program identifies a deliberate method to develop and maintain a complete NIMS core curriculum and, concurrently, to provide training guidance to stakeholders for developing their training plans.

### **NIMS Training Matrix**

<b>All Emergency Responders</b>	<b>First-Line Supervisors</b>	<b>Mid-Level Response Supervisors</b>	<b>Senior-Level Response Managers</b>	<b>Elected/Appointed Officials***</b>	<b>Emergency Operations Center (EOC)/Multi-Agency Coordination System (MACS) Personnel**</b>
IS100 (4 hrs) Introduction to the Incident Command System	IS100 (4 hrs) Introduction to the Incident Command System	IS100 (4 hrs) Introduction to the Incident Command System	IS100 (4 hrs) Introduction to the Incident Command System	IS100 (4 hrs) Introduction to the Incident Command System	IS100 (4 hrs) Introduction to the Incident Command System
IS700 (4 hrs) NIMS, an Introduction	IS700 (4 hrs) NIMS, an Introduction	IS700 (4 hrs) NIMS, an Introduction	IS700 (4 hrs) NIMS, an Introduction	IS700 (4 hrs) NIMS, an Introduction	IS700 (4 hrs) NIMS, an Introduction
	IS200 (12 hrs) ICS for Single Resources and Initial Action Incidents	IS200 (12 hrs) ICS for Single Resources and Initial Action Incidents	IS200 (12 hrs) ICS for Single Resources and Initial Action Incidents	Recommended Core Course: G402 ICS Overview for Executive/Senior Officials (2 hrs)*	IS800 (3 hrs) National Response Framework (NRF), an Introduction
		IS800 (3 hrs) National Response Framework (NRF), an Introduction	IS800 (3 hrs) National Response Framework (NRF), an Introduction	Recommended Additional Course: G191 (8 hrs)*, ICS/EOC Interface	G191(8 hrs)* ICS/EOC Interface
		ICS/G300 (18 hrs)* Intermediate ICS for Expanding Incidents	ICS/G300 (18 hrs)* Intermediate ICS for Expanding Incidents		G775 (16 hrs) EOC Management and Operations
			ICS/G400 (14 hrs)* Advanced ICS, Command and General Staff-Complex Incidents		IS706 (2.5 hrs) NIMS Intrastate Mutual Aid-an Introduction
					IS701 (5 hrs) Multi-Agency Coordination System (MACS) Course

# Emergency Management

## Definition, Vision, Mission, Principles

### Definition

Emergency management is the managerial function charged with creating the framework within which communities reduce vulnerability to hazards and cope with disasters.

### Vision

Emergency management seeks to promote safer, less vulnerable communities with the capacity to cope with hazards and disasters.

### Mission

Emergency Management protects communities by coordinating and integrating all activities necessary to build, sustain, and improve the capability to mitigate against, prepare for, respond to, and recover from threatened or actual natural disasters, acts of terrorism, or other man-made disasters.

### Principles

Emergency Management must be:

1. **Comprehensive** — emergency managers consider and take into account all hazards, all phases, all stakeholders and all impacts relevant to disasters.
2. **Progressive** — emergency managers anticipate future disasters and take preventive and preparatory measures to build disaster-resistant and disaster-resilient communities.
3. **Risk-Driven** — emergency managers use sound risk management principles (hazard identification, risk analysis, and impact analysis) in assigning priorities and resources.
4. **Integrated** — emergency managers ensure unity of effort among all levels of government and all elements of a community.
5. **Collaborative** — emergency managers create and sustain broad and sincere relationships among individuals and organizations to encourage trust, advocate a team atmosphere, build consensus, and facilitate communication.
6. **Coordinated** — emergency managers synchronize the activities of all relevant stakeholders to achieve a common purpose.
7. **Flexible** — emergency managers use creative and innovative approaches in solving disaster challenges.
8. **Professional** — emergency managers value a science and knowledge-based approach based on education, training, experience, ethical practice, public stewardship and continuous improvement.



FEMA

